



SHANGHAI YONGXING ELECTRONIC SWITCH CO., LTD.



SHANGHAI YONGXING ELECTRONIC

上海永星电子

上海永星电子开关有限公司

SHANGHAI YONGXING ELECTRONIC SWITCH CO., LTD.

公司地址: 上海市松江区泗泾镇高新技术开发区莘砖公路1275号
1275 Xinzhuan Rd, Songjiang Area, Shanghai City, China
邮政编码: (Zip Code)201601
E-mail:yx@yxswitch.com
URL:www.yxswitch.com
www.yongxing.en.alibaba.com

国内贸易部Domestic Sales Dept:
TEL:86-21-57629125 57629126
FAX:86-21-57629089
E-mail:sales@yxswitch.com

国际贸易部International Sales Dept:
TEL:86-21-57629082-816 or 86-21-57629081
FAX:86-21-57629081
E-mail:jane@yxswitch.com

上海办事处Shanghai Sales Branch
TEL:86-21-63800101(Guangfu Rd)
TEL:86-21-63813757

(上海赛格电子市场)
TEL:86-21-53081943(Hi-Tech King World)

深圳办事处Shenzhen Sales Branch
TEL:0755-83678098
FAX:0755-83001717

(2010) 版
如技术参数变动, 恕不另行通知



25 YEARS

What we own not only the history!

ISO9001:2000 ENEC UL CSA CE ROHS IEC66 GJB/29001A-200



◎公司简介 Company introduction

上海永星电子开关有限公司(前身上海永星电子开关厂)成立于1985年,是国内生产和销售机电开关、接插件等电器产品的著名厂商之一。本公司现有产品分二十余类:按钮开关、波动开关、旋钮开关、钥匙开关、拨码开关、拨动开关、冰箱门开关、小型钮子开关、琴键开关、微动开关、轻触开关、指示灯、蜂鸣器、接线盒、保险丝座、插头、插座以及各种配件等,由此可以派生4000多种产品。产品广泛应用于电子电器、仪器仪表、机电设备、广播通信、家用电器、医疗器械、汽车、自动化控制各个领域。多年来,公司产品以优美的外观、良好的性能、稳定而可靠的质量以及完善的售后服务赢得了国内外广大用户的信赖。

公司拥有众多的开关、接插件行业高级专业人才,并培养了一批高素质的年轻技术骨干,形成了强大而雄厚的技术队伍。公司技术人员在继续提高改善老产品性能的同时,还凭借上海高度发达的技术信息资源,借鉴国内外同行经验,不断开发出领先业界的新型产品。公司有全面的质量控制体系,严格控制从设计开发产品,到成品出厂直至售后服务各个环节。公司已通过ISO9001-2000质量体系认证。许多产品已经通过CQC、CE、UL、VDE、ENEC等国内外权威认证机构的质量认证。

我们的质量方针是:“以科技求进步,以质量创品牌”。

公司将一如既往的不断增强员工的质量意识,提高员工的自身素质和工作质量,始终如一的奉行“诚信为本、质量在先”的经营理念。我们热忱欢迎新老客户选用“上开牌”永星电子产品,并愿为您开发其它产品,最大限度的满足您的需求。

我们成功的过去,您已经看到,您还希望的,我们正在努力。

让我们携手并肩,精诚合作,共创辉煌的明天。

总裁:



Company Introduction

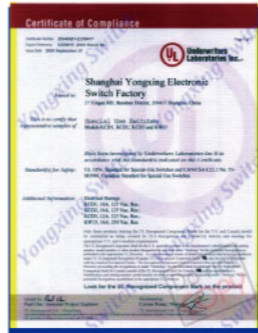
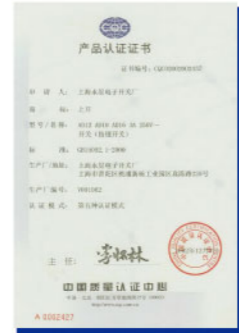
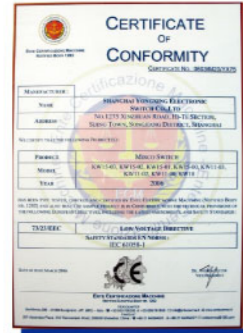
Established in 1985, Shanghai Yongxing Electronic Switch Co.,Ltd. is a famous switch and connector manufacturer in China. We produce and sell high quality electronic switches, including 20 categories, 4000 models pushbutton switches, rocker switches, rotary switches, key lock switches, dip switches, slide switches, refrigerator door switches, miniature toggle switches, piano key switches, micro switches, touch switches, indicators, buzzers, junction boxes, plugs, sockets, and etc. All these products are widely used in the field of electronic instrument, meter, eletromechanical device, broadcast, communication, home appliance, medical appliance, automoblie and automatic control. Our products have won the domestic and foreign customers by the exquisite appearance, the excellent performance, the stable and reliable quality as well as the perfect aftersale service.

The most outstanding senior talents of switch and connector have gathered in our company where a number of high quality young technicians were brought up. With continuing improving the performace of the old products, while relying on Shanghai highly developing information technology resoures and referencing other's experience of in this industry, we continue to develop new products which could lead the industry. We adopt a very comprehensive quality control system, strictly controlling all steps of the products from the designs to finished products and aftersale services. We have got ISO 9001:2000 Quality System Certification. Most of our products have certified by the authentic certification authorities, home and abroad, such as CQC、CE、UL、VDE、ENEC etc.

The management policy of our company is Technology takes improvemet, quality builds brand. We keep improving the staff's quality consciousness, personality and work efficiency. We always following our operat-ing theory Credit is the basis, quality is the first. We welcome you choose the products with brand SHANGKAI, moreover we would like to develop custome made products according to your demand.

You have seen our success, and you will see we are working hard on what you hope. Let's cooperate sincerely and create a brighter future.

2007.通过国军标GJB/Z90011A-2001、GJB9001A-2001质量管理体系认证（总装备部、国防科工委）
 2007. By GJB GJB/Z90011A-2001, GJB9001A-2001 Quality Management System Certification (General Armament Department of National Defense Science, Technology)
 2006.通过VDE工厂检查
 2006.We passed the VDE factory examination
 2006.公司产品取得CE、欧盟RoHS认证
 2006.All our products were certified by CE and RoHS authority
 2005.公司成立了上海永星销售总公司
 2005.We established "Shanghai Yongxing Sales Company"
 2005.公司更名为上海永星电子开关有限公司
 2005.We changed our name into "Shanghai Yongxing Electronic Switch CO.,Ltd."
 2005.ISO9001.2000认证体系换版
 2005.We passed the ISO9001.2000
 2004.公司在松江高新区建立新厂区
 2004.We built new workshop buildings in Songjiang Hi-tech Area
 2004.部分产品通过UL、CE认证
 2004.Some of our products were certified by UL and CE authority
 2004.公司取得出口经营权
 2004.Our parent company gained right to export
 2002.公司产品通过CQC认证
 2002.All our products were certified by CQC authority
 2002.公司产品通过长城认证
 2002.All our products were certified by Great Wall authority
 2001.公司通过ISO9002 1994
 2001.We passed the ISO9002 1994
 1985.上海永星电子开关厂成立
 1985.Shanghai Yongxing Electronic Switch was established



本厂将一如既往地不断增强员工的质量意识，提高员工的自身素质和工作质量，始终如一得奉行“诚信为本，质量在先”的经营理念，我们热忱欢迎新老客户选用“上开”牌永星电子产品，并愿为你开发其他产品，最大限度地满足您的要求。
 我们成功的过去，你们已看到，你们还希望的，我们正在努力，让我们携手并肩，精诚合作，共创辉煌的明天。

We keep improving the staff's quality consciousness, personality and work efficiency. We always following our operating theory Credit is the basis, quality is the first. We welcome you choose the products with brand SHANGKAI, moreover we would like to develop custome made products according to your demand.

You have seen our success, and you will see we are working hard on what you hope. Let's cooperate sincerely and create a brighter future.



- CNC数控加工中心 1台
- 震雄塑料机 30台
- 高速冲床 10多台
- 台式冲床 100多台
- 生产流水线 9条
- 台湾快捷立式铣床 2部
- 线切割机 9台
- 多种磨订 10台
- 电脉冲 4台
- 高精度投影测量仪 6台
- 自动铆点机 10台
- ROHS光谱分析仪 1台

- CNC Manufacturing Center
- Zhengxiang Injection Moulding Machines
- high speed Punch Press Machines
- Product Assembly Lines
- Taipei-type fast vertical milling machine.
- Wire-cut EDM
- More than 10 Kinds of Grinding Machine
- Electrical Impulses Machine
- 4 high precision Projection Measuring Instruments
- 6 Automatic Riveting Machines
- 10 spectral Analyseses for ROHS

25年开关制造经验
 诚信为本 质量在先
 25 years of manufacturing experience switch
 Quality of prior good faith



LA133 系列型号及含义 LA133 Series Model And Implication 01-04

- 型号及含义 Model 01
- 按钮头及中座配置类别代码 Code for button head & Bracket house 01
- 产品特征代码 code for product feature 02
- 触点代码 contact code 03
- 带灯开关电压等级 Voltage code of indicator for illuminated switch 03
- 按动件颜色代码 Code of full-face colour 03
- 产品组装示意图 Assembly diagram 04

LA133-A系列 (φ 22mm) LA133-A Series 05-07

LA133-B系列 (φ 22mm) LA133-B Series 08-10

LA133-E系列 (φ 30mm) LA133-E Series 11-13

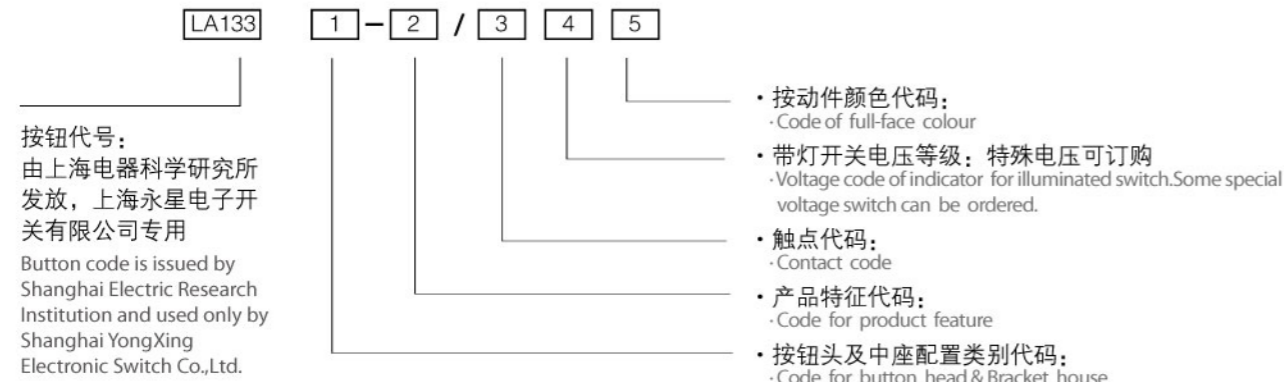
安装使用说明 Illustration 14

- 触点印字标签 Contact labelling 14
- 开孔尺寸 Mounting hole size 14
- 旋钮、钥匙钮开关元件功能图解 Function diagram of selectors and key selectors 14

LA133-系列按钮附件 Accessory of LA133-series pushbutton 15-16

AD111系列指示灯说明 AD111 series indicator 17-21

型号及含义 Model



1 按钮头及中座配置类别代码 Code for button head & Bracket house

系列 Series	LA133-A1/a1	系列 Series	LA133-B1	系列 Series	LA133-E1/e1
银白色 A1 Argentate		银白色+黑色 Argentate & Black		银白色 E1 Argentate	
黑色 a1 Black		B1		黑色 e1 Black	
系列 Series	LA133-A2/a2	系列 Series	LA133-B2	系列 Series	LA133-E2/e2
银白色 A2 Argentate		银白色+黑色 Argentate & Black		银白色 E2 Argentate	
黑色 a2 Black		B2		黑色 e2 Black	

特点 1. LA133- (A1、a1、B1、E1、e1): 外壳轮廓鲜明, 线条优美。采用斜式螺钉固定安装, 继承瑞士EAO原装设计风格, 符合欧美严谨、坚固可靠的工程设计理念。

2. LA133- (A2、a2、B2、E2、e2): 外观层次分明, 高强度PBT塑料制品与直式螺钉相结合固定, 既继承了A1、a1、B1、E1、e1稳重坚固的特点, 又兼顾了制造成本, 是A1、a1、B1、E1、e1的简约形式, 使用户有多种经济选择方案。

Features:

1. LA133-(A1、a1、B1、E1、e1): Outline clear-cut appearance, graceful lines. Install and Fix by inclined-screw, Succeed to design description for EAO Switzerland, accord to occident strict and soundness of the engineering design concept.

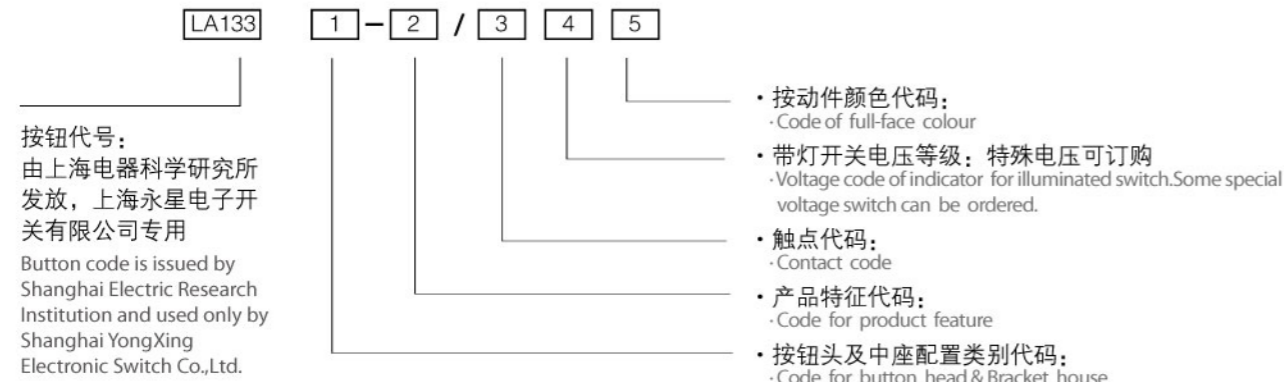
2. LA133-(A2、a2、B2、E2、e2): Well-bedded appearance, Fixed by high-strength plastic PBT production and Straight screw combination, not only inherited the A1、a1、B1、E1、e1 stable characteristics of a solid, but also take into account the cost of manufacturing, it is A1、a1、B1、E1、e1 simple form, it is a economic options for consumer.

2 产品特征代码 code for product feature

代号 code	描述 Description	代号 code	描述 Description
P	一般按钮 Momentary action pushbutton	T	高位钮 Raised lens Pushbutton
PS	自锁按钮 Maintained action actuator	TS	高位自锁钮 Maintained action actuator Raised lens Pushbutton
PD	带灯按钮 Illuminated pushbutton actuator	TD	高位带灯钮 Illuminated Raised lens Pushbutton
PDS	带灯自锁按钮 Illuminated maintained action pushbutton actuator	TDS	高位带灯自锁钮 Illuminated Maintained action actuator Raised lens Pushbutton
X2S	二位自锁短柄选择开关 Short level two-position maintained action selector switch	XL2S	二位自锁长柄选择开关 Long level two-position maintained action selector switch
X3S	三位自锁短柄选择开关 Short level three-position selector switch	XL3S	三位自锁长柄选择开关 Long level three-position selector switch
X3	三位自复短柄选择开关 Short level three-position return action selector switch	XL3	三位自复长柄选择开关 Long level three-position return action selector switch
X3SR	三位左自复右自锁短柄选择开关 Short level 3-position left return action, right maintained action selector switch	XL3SR	三位左自复右自锁长柄选择开关 Long level 3-position left return action, right maintained action selector switch
X3SL	三位左自锁右自复短柄选择开关 Short level 3-position left Maintained action, right return action selector switch	XL3SL	三位左自锁右自复长柄选择开关 Long level 3-position left Maintained action, right return action selector switch
XD24S	二位45° 自锁带灯选择开关 Two-position 45° illuminated maintained action selector switch	XD3S	三位自锁带灯选择开关 3-position illuminated maintained action selector switch
XD24	二位45° 自复带灯选择开关 Two-position 45° illuminated return action selector switch	XD3SR	三位左自复右自锁带灯选择开关 3-position illuminated left return action, right maintained action selector switch
XD2S	二位90° 自锁带灯选择开关 Two-position 90° illuminated maintained action selector switch	XD3SL	三位左自锁右自复带灯选择开关 3-position illuminated left maintained action, right return action selector switch
XD3	三位自复带灯选择开关 Three-position illuminated return action keylock switch		

代号 code	描述 Description	代号 code	描述 Description
M	蘑菇钮 Mushroom-head pushbutton actuator	Y2S	二位自锁钥匙选择开关 Two-position maintained action keylock switch
MS	蘑菇自锁钮 Mushroom pushbutton with latching	Y3S	三位自锁钥匙选择开关 Three-position keylock switch
MD	蘑菇带灯钮 Illuminated mushroom-head pushbutton actuator	Y3	三位自复钥匙选择开关 Three-position return action keylock switch
MDS	蘑菇带灯自锁钮 Illuminated Maintained action mushroom-head pushbutton actuator	Y3SR	三位左自复右自锁, 钥匙选择开关 Three-position left return action, right maintained action keylock switch
J	紧停按钮 Emergency stop stop pushbutton	Y3SL	三位左自锁右自复, 钥匙选择开关 Three-position, left Maintained action, right return action keylock switch

型号及含义 Model



1 按钮头及中座配置类别代码 Code for button head & Bracket house

系列 Series	LA133-A1/a1	系列 Series	LA133-B1	系列 Series	LA133-E1/e1
银白色 A1 Argentate		银白色+黑色 Argentate & Black		银白色 E1 Argentate	
黑色 a1 Black		B1		黑色 e1 Black	
系列 Series	LA133-A2/a2	系列 Series	LA133-B2	系列 Series	LA133-E2/e2
银白色 A2 Argentate		银白色+黑色 Argentate & Black		银白色 E2 Argentate	
黑色 a2 Black		B2		黑色 e2 Black	

特点

1. LA133- (A1、a1、B1、E1、e1): 外壳轮廓鲜明, 线条优美。采用斜式螺钉固定安装, 继承瑞士EAO原装设计风格, 符合欧美严谨、坚固可靠的工程设计理念。

2. LA133- (A2、a2、B2、E2、e2): 外观层次分明, 高强度PBT塑料制品与直式螺钉相结合固定, 既继承了A1、a1、B1、E1、e1稳重坚固的特点, 又兼顾了制造成本, 是A1、a1、B1、E1、e1的简约形式, 使用户有多种经济选择方案。

Features:

1. LA133-(A1、a1、B1、E1、e1): Outline clear-cut appearance, graceful lines. Install and Fix by inclined-screw, Succeed to design description for EAO Switzerland, accord to occident strict and soundness of the engineering design concept.

2. LA133-(A2、a2、B2、E2、e2): Well-bedded appearance, Fixed by high-strength plastic PBT production and Straight screw combination, not only inherited the A1、a1、B1、E1、e1 stable characteristics of a solid, but also take into account the cost of manufacturing, it is A1、a1、B1、E1、e1 simple form, it is a economic options for consumer.

2 产品特征代码 code for product feature

代号 code	描述 Description	代号 code	描述 Description
P	一般按钮 Momentary action pushbutton	T	高位钮 Raised lens Pushbutton
PS	自锁按钮 Maintained action actuator	TS	高位自锁钮 Maintaied action actuator Raised lens Pushbutton
PD	带灯按钮 Illuminated pushbutton actuator	TD	高位带灯钮 Illuminated Raised lens Pushbutton
PDS	带灯自锁按钮 Illuminated maintained action pushbutton actuator	TDS	高位带灯自锁钮 Illuminated Maintained action actuator Raised lens Pushbutton
X2S	二位自锁短柄选择开关 Short level two-position maintained action, selector switch	XL2S	二位自锁长柄选择开关 Long level two-position maintained action selector switch
X3S	三位自锁短柄选择开关 Short level three-position selector switch	XL3S	三位自锁长柄选择开关 Long level three-position selector switch
X3	三位自复短柄选择开关 Short level three-position return action selector switch	XL3	三位自复长柄选择开关 Long level three-position return action selector switch
X3SR	三位置左自复右自锁短柄选择开关 Short level 3-position left return action, right maintained action selector switch	XL3SR	三位置左自复右自锁长柄选择开关 Long level 3-position left return action, right maintained action selector switch
X3SL	三位置左自锁右自复短柄选择开关 Short level 3-position left Maintained action, right return action selector switch	XL3SL	三位置左自锁右自复长柄选择开关 Long level 3-position left Maintained action, right return action selector switch
XD24S	二位45° 自锁带灯选择开关 Two-position 45° illuminated maintained action selector switch	XD3S	三位自锁带灯选择开关 3-position illuminated maintained action selector switch
XD24	二位45° 自复带灯选择开关 Two-position 45° illuminated return action selector switch	XD3SR	三位左自复右自锁带灯选择开关 3-position illuminated left return action, right maintained action selector switch
XD2S	二位90° 自锁带灯选择开关 Two-position 90° illuminated maintained action selector switch	XD3SL	三位左自锁右自复带灯选择开关 3-position illuminated left maintained action, right return action selector switch
XD3	三位自复带灯选择开关 Three-position illuminated return action keylock switch		

代号 code	描述 Description	代号 code	描述 Description
M	蘑菇钮 Mushroom-head pushbutton actuator	Y2S	二位自锁钥匙选择开关 Two-position maintained action keylock switch
MS	蘑菇自锁钮 Mushroom pushbutton with latching	Y3S	三位自锁钥匙选择开关 Three-position keylock swit
MD	蘑菇带灯钮 Illuminated mushroom-head pushbutton actuator	Y3	三位自复钥匙选择开关 Three-position return action keylock switch
MDS	蘑菇带灯自锁钮 Illuminated Maintained action mushroom-head pushbutton actuator	Y3SR	三位置左自复右自锁, 钥匙选择开关 Three-position left return action, right maintained action keylock switch
J	紧停钮开关 Emergency stop stop pushbutton	Y3SL	三位置左自锁右自复, 钥匙选择开关 Three-position, left Maintained action, right return action keylock switch

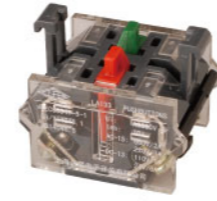


3 触点代码: contact code

代号 Code		描述 Description	代号 Code		描述 Description
快动型 Snap-action switching element	缓动型 Slow-make switching element		快动型 Snap-action switching element	缓动型 Slow-make switching element	
K10	H10	一常开 1no	K40	H40	四常开 4no
K01	H01	一常闭 1nc	K04	H04	四常闭 4nc
K20	H20	二常开 2no	K11	H11	一常开和一常闭 1no And 1nc
K02	H02	二常闭 2nc	K12	H12	一常开和二常闭 1no And 2nc
K30	H30	三常开 3no	K21	H21	二常开和一常闭 2no And 1nc
K03	H03	三常闭 3nc	K22	H22	二常开和二常闭 2no And 2nc
K13	H13	一常开和三常闭 1no & 3nc	K31	H31	三常开和一常闭 3no And 1nc



K型
Snap-action switching element



H型
Slow-make switching element

4 带灯开关电压等级: Voltage code of indicator for illuminated switch

光源 Illumination	发光二极管 LED(Light-emitting Diode)	
电源 Power Supply	DC · AC	AC
电压 Voltage	6V 12V 24V 36V 48V 110V 220V 380V	110V 220V 380V

注: 特殊电压可以订购。
Note: Special Voltage Can Be Made

5 按动作颜色代码: Code of full-face colour

代码 Code	R	G	Y	W	S	B	J
描述 Description	红色	绿色	黄色	白色	蓝色	黑色	金属平钮 Flat Metal Buttons

部件材料 Parts material

头部外圈 Bezel of head	连接中座 Bracket	头部壳体 Shell of button head	触点 Contact point	触点座体 Bracket house	触片 Contact panel
AL	Zn or PBT.PA	PA	AgSnO ₂ In ₂ O ₃	PC	Cu

◆ 用途

LA133系列按钮适用于交流50HZ或60HZ, 电压至交流600V及直流400V的数控机床、机械、电力、电讯、船舶、冶金、化工等电气控制电路中作控制信号、联锁等使用。

Useage

LA133 series of buttons used for AC 50HZ or 60HZ, voltage rage Ac from 600V to DC 400V of CNC machine, and Mechanical, Electrical, Telecommunications, Shipbuilding, Metallurgy, Chemical switch of electrical control devices, which use as control illumination & interlocking switch etc.

◆ 使用条件 Environmental conditions

环境温度 Operating temperature	-25°C ~ +55°C	安装类别 Installation group	Ⅲ类 Ⅲ Class
污染等级 Degree of pollution	3级 Level 3	安装极限高度 Installation height	≤2000m
抗振动 Vibration	10 ~ 2000Hz · 1mm · 15g	空气相对湿度 Relative humidity	≤98%
防护等级 Front protection degree	IP40 (订单未注明) IP65 (订货时需注明) IP40 (Usually Usage if not noted in order) IP65 (Should be noted in order) 部分按钮加防水罩可达IP67 Can be reach IP67 if use Protective membranes for some button		

◆ 电气规格参数 Electrical characteristics

额定绝缘电压: AC660V Rated Insulation Voltage	约定发热电流: 10A Rated Thermal Current
工频耐压: 2500V/min Max. insulation voltage	使用类别: AC-15, DC-13 Usage Category

使用类别 Usage Category	额定绝缘电压 Ui V Connection Block	额定工作电压UeV working rate voltage	额定工作电流IeA working rate current	约定发热电流IthA Rated Thermal Current
AC-15	660	220 660	6 2	10
DC-13	660	110 220	1 0.6	10

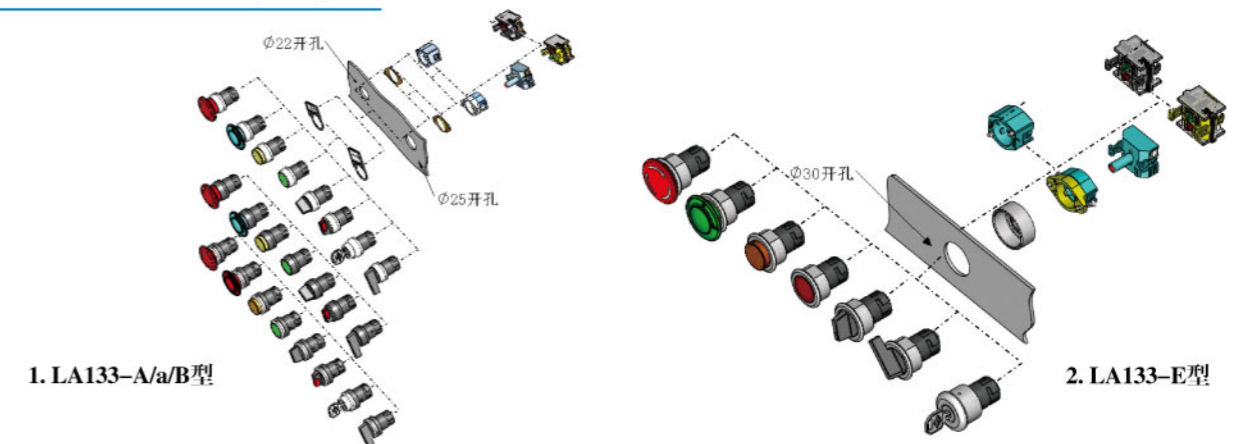
◆ 机械寿命 Mechanical lifetime

结构型式 structural style	机械寿命(次) mechanical life (cycles)	操作频率 (次/h) operation frequency
一般式、蘑菇式、带灯式 Pushbutton, Mushroom-head pushbutton & illuminated pushbutton actuator	100万 1 million	1200
旋钮式、钥匙式、自锁式 Rotary Switch, Keylock switches & Maintained action actuator	30万 0.3 million	120

◆ 电寿命 Electrical lifetime

使用类别 Usage Category	电寿命 (次) Electrical lifetime (cycles)	操作频率 Operation frequency
AC-15	60万 0.6 million	1200
DC-13	25万 0.25 million	1200

产品组装示意图: Assembly diagram



名称 Name	样式 Pattern	工作状态 Working	型号 Model	颜色 color	灯电压 Voltage	外形尺寸 Dimension
按钮 Pushbutton		瞬动 Momentary 自锁 Maintained	LA133-A1.P/□▲ LA133-A1.PS/□▲	● 红-R ● 绿-G ● 黄-Y ○ 白-W ● 蓝-S ● 黑-B		
高位按钮 Raised lens Pushbutton		瞬动 Momentary 自锁 Maintained	LA133-A1.T/□▲ LA133-A1.TS/□▲	● 红-R ● 绿-G ● 黄-Y ○ 白-W ● 蓝-S ● 黑-B		
带灯按钮 Illuminated Pushbutton		瞬动 Momentary 自锁 Maintained	LA133-A1.PD/□■▲ LA133-A1.PDS/□■▲	● 红-R ● 绿-G ● 黄-Y ○ 白-W ● 蓝-S	DC 6V、12V、 24V、36V、 48V、110V、 220V AC 110V、220V、 380V	
高位带灯按钮 Illuminated Raised lens Pushbutton		瞬动 Momentary 自锁 Maintained	LA133-A1.TD/□■▲ LA133-A1.TDS/□■▲	● 红-R ● 绿-G ● 黄-Y ○ 白-W ● 蓝-S	DC 6V、12V、 24V、36V、 48V、110V、 220V AC 110V、220V、 380V	

◆ 说明

- 斜线后的□填写常开常闭的触点数（触点代码），■填写带灯的电压等级，▲填写颜色。
- 带灯按钮的光源均为高亮纯色LED。
- 订货时如需L2连接中座时，即可把型号中A1改为A2。
- 订货时如需黑色按钮头时，即可把型号中A改为a。

Description

- Contact Code is filled in □, voltage in ■, color code in ▲.
- Use bright & solid color of LED for illuminated Pushbutton.
- A1 can be changed into A2 when L2 bracket is necessary at ordering.
- A can be changed into a when black pushbutton is necessary at ordering.

名称 Name	样式 Pattern	工作状态 Working	型号 Model	颜色 color	灯电压 Voltage	外形尺寸 Dimension
蘑菇按钮 Mushroom pushbutton		瞬动 Momentary 自锁 Maintained	LA133-A1.M/□▲ LA133-A1.MS/□▲	● 红-R ● 绿-G ● 黄-Y ○ 白-W ● 蓝-S ● 黑-B		
蘑菇带灯按钮 Illuminated mushroom pushbutton		瞬动 Momentary 自锁 Maintained	LA133-A1.MD/□■▲ LA133-A1.MDS/□■▲	● 红-R ● 绿-G ● 黄-Y ○ 白-W ● 蓝-S	DC · AC 6V、12V、 24V、36V、 48V、110V、 220V AC 110V、220V、 380V	
紧急按钮 Emergency stop pushbutton		按压 锁定， 顺时针 旋转 复位 when pressing button, return after clockwise rotation	LA133-A1.J/□▲	● 红-R ● 黄-Y		

◆ 说明

- 斜线后的□填写常开常闭的触点数（触点代码），■填写带灯的电压等级，▲填写颜色。
- 带灯按钮的光源均为高亮纯色LED。
- 订货时如需L2连接中座时，即可把型号中A1改为A2。
- 订货时如需黑色按钮头时，即可把型号中A改为a。

Description

- Contact Code is filled in □, voltage in ■, color code in ▲.
- Use bright & solid color of LED for illuminated Pushbutton.
- A1 can be changed into A2 when L2 bracket is necessary at ordering.
- A can be changed into a when black pushbutton is necessary at ordering.

名称 Name	样式 Pattern	手柄位置及型号 Model	颜色 color	灯电压 Voltage	外形尺寸 Dimension
短柄旋钮 Short lever rotary selector		二位置 Two-position 0° 90° LA133-A1.X2S/□▲	● 红-R ● 绿-G ● 黄-Y ● 黑-B		
		三位置 Three-position 45° 0 45° LA133-A1.X3S/□▲ 45° 0 45° LA133-A1.X3/□▲ 45° 0 45° LA133-A1.X3SR/□▲ 45° 0 45° LA133-A1.X3SL/□▲			
长柄旋钮 long lever rotary sector		二位置 Two-position 0° 90° LA133-A1.XL2S/□▲	● 红-R ● 绿-G ● 黄-Y ● 黑-B		
		三位置 Three-position 45° 0 45° LA133-A1.XL3S/□▲ 45° 0 45° LA133-A1.XL3/□▲ 45° 0 45° LA133-A1.XL3SR/□▲ 45° 0 45° LA133-A1.XL3SL/□▲			
带灯旋钮 Illuminated rotary		二位置 Two-position 0° 90° LA133-A1.XD2S/□■▲ 0° 45° LA133-A1.XD24S/□■▲ 0° 45° LA133-A1.XD24/□■▲	● 红-R ● 绿-G ● 黄-Y ○ 白-W ● 蓝-S	DC · AC 6V、12V、 24V、36V、 48V、110V、 220V AC 110V、220V、 380V	
		三位置 Three-position 45° 0 45° LA133-A1.XL3S/□■▲ 45° 0 45° LA133-A1.XL3/□■▲ 45° 0 45° LA133-A1.XL3SR/□■▲ 45° 0 45° LA133-A1.XL3SL/□■▲			
钥匙钮 Keylock switch		二位置 Two-position 0° 90° LA133-A1.Y2S/□		钥匙在0位 可取出, 若需在 其它位置取出, 订单时要注明 Key in 0 can be removed, if want take out in other locations, should be indicated on the orders	
		三位置 Three-position 45° 0 45° LA133-A1.Y3S/□ 45° 0 45° LA133-A1.Y3/□ 45° 0 45° LA133-A1.Y3SR/□ 45° 0 45° LA133-A1.Y3SL/□			

◆ 说明

- 斜线后的□填写常开常闭的触点数(触点代码), ■填写带灯的电压等级, ▲填写颜色。
- 带灯钮的光源均为高亮纯色LED。
- 订货时如需L2连接中座时, 即可把型号中A1改为A2。
- 订货时如需黑色按钮头时, 即可把型号中A改为a。

Description

- Contact Code is filled in □, voltage in ■, color code in ▲.
- Use bright & solid color of LED for illuminated Pushbutton.
- A1 can be changed into A2 when L2 bracket is necessary at ordering.
- A can be changed into a when black pushbutton is necessary at ordering.

名称 Name	样式 Pattern	工作状态 Working	型号 Model	颜色 color	灯电压 Voltage	外形尺寸 Dimension
按钮 Pushbutton		瞬动 Momentary 自锁 Maintained	LA133-B1.P/□▲	● 红-R ● 绿-G ● 黄-Y ○ 白-W ● 蓝-S ● 黑-B		
			LA133-B1.PS/□▲			
高位按钮 Raised lens Pushbutton		瞬动 Momentary 自锁 Maintained	LA133-B1.T/□▲	● 红-R ● 绿-G ● 黄-Y ○ 白-W ● 蓝-S ● 黑-B		
			LA133-B1.TS/□▲			
带灯按钮 Illuminated Pushbutton		瞬动 Momentary 自锁 Maintained	LA133-B1.PD/□■▲	● 红-R ● 绿-G ● 黄-Y ○ 白-W ● 蓝-S	DC · AC 6V、12V、 24V、36V、 48V、110V、 220V AC 110V、220V、 380V	
			LA133-B1.PDS/□■▲			
高位带灯按钮 Illuminated Raised lens Pushbutton		瞬动 Momentary 自锁 Maintained	LA133-B1.TD/□■▲	● 红-R ● 绿-G ● 黄-Y ○ 白-W ● 蓝-S	DC · AC 6V、12V、 24V、36V、 48V、110V、 220V AC 110V、220V、 380V	
			LA133-B1.TDS/□■▲			

◆ 说明

- 斜线后的□填写常开常闭的触点数(触点代码), ■填写带灯的电压等级, ▲填写颜色。
- 带灯钮的光源均为高亮纯色LED。
- 订货时如需L2连接中座时, 即可把型号中B1改为B2。

Description

- Contact Code is filled in □, voltage in ■, color code in ▲.
- Use bright & solid color of LED for illuminated Pushbutton.
- B1 can be changed into B2 when L2 bracket is necessary at ordering.

名称 Name	样式 Pattern	工作状态 Working	型号 Model	颜色 color	灯电压 Voltage	外形尺寸 Dimension
蘑菇钮 Mushroom pushbutton		瞬动 Momentary 自锁 Maintained	LA133-B1.M/□▲ LA133-B1.MS/□▲	● 红-R ● 绿-G ● 黄-Y ○ 白-W ● 蓝-S ● 黑-B		
蘑菇带灯钮 illuminated mushroom pushbutton		瞬动 Momentary 自锁 Maintained	LA133-B1.MD/□■▲ LA133-B1.MDS/□■▲	● 红-R ● 绿-G ● 黄-Y ○ 白-W ● 蓝-S	DC·AC 6V、12V、 24V、36V、 48V、110V、 220V AC 110V、220V、 380V	
紧急按钮 Emergency stop pushbutton		按压 锁定， 顺时针 旋转 复位 maintained when pressing button， return after clockwise rotation	LA133-B1.J/□▲	● 红-R ● 黄-Y		

◆ 说明

- 斜线后的□填写常开常闭的触点数（触点代码），■填写带灯的电压等级，▲填写颜色。
- 带灯钮的光源均为高亮纯色LED。
- 订货时如需L2连接中座时，即可把型号中B1改为B2。

Description

- Contact Code is filled in □, voltage in ■, color code in ▲.
- Use bright & solid color of LED for illuminated Pushbutton.
- B1 can be changed into B2 when L2 bracket is necessary at ordering.

名称 Name	样式 Pattern	手柄位置及型号 Model	颜色 color	灯电压 Voltage	外形尺寸 Dimension
短柄旋钮 Short lever rotary selector		二位置 Two-position 0° 90° LA133-B1.X2S/□▲ 三位置 Three-position 45° 0 45° LA133-B1.X3S/□▲ 45° 0 45° LA133-B1.X3/□▲ 45° 0 45° LA133-B1.X3SR/□▲ 45° 0 45° LA133-B1.X3SL/□▲	● 红-R ● 绿-G ● 黄-Y ● 黑-B		
长柄旋钮 long lever rotary sector		二位置 Two-position 0° 90° LA133-B1.XL2S/□▲ 三位置 Three-position 45° 0 45° LA133-B1.XL3S/□▲ 45° 0 45° LA133-B1.XL3/□▲ 45° 0 45° LA133-B1.XL3SR/□▲ 45° 0 45° LA133-B1.XL3SL/□▲	● 红-R ● 绿-G ● 黄-Y ● 黑-B		
带灯旋钮 illuminated rotary		二位置 Two-position 0° 90° LA133-B1.XD2S/□■▲ 0° 45° LA133-B1.XD24S/□■▲ 0° 45° LA133-B1.XD24/□■▲ 三位置 Three-position 45° 0 45° LA133-B1.XL3S/□■▲ 45° 0 45° LA133-B1.XL3/□■▲ 45° 0 45° LA133-B1.XL3SR/□■▲ 45° 0 45° LA133-B1.XL3SL/□■▲	● 红-R ● 绿-G ● 黄-Y ○ 白-W ● 蓝-S	DC·AC 6V、12V、 24V、36V、 48V、110V、 220V AC 110V、220V、 380V	
钥匙钮 Keylock switch		二位置 Two-position 0° 90° LA133-B1.Y2S/□ 三位置 Three-position 45° 0 45° LA133-B1.Y3S/□ 45° 0 45° LA133-B1.Y3/□ 45° 0 45° LA133-B1.Y3SR/□ 45° 0 45° LA133-B1.Y3SL/□		钥匙在0位 可取出，若需在 其它位置取出， 订单时要注明 Key in 0 can be removed, if want take out in other locations, should be indicated on the orders	

◆ 说明

- 斜线后的□填写常开常闭的触点数（触点代码），■填写带灯的电压等级，▲填写颜色。
- 带灯钮的光源均为高亮纯色LED。
- 订货时如需L2连接中座时，即可把型号中B1改为B2。

Description

- Contact Code is filled in □, voltage in ■, color code in ▲.
- Use bright & solid color of LED for illuminated Pushbutton.
- B1 can be changed into B2 when L2 bracket is necessary at ordering.

名称 Name	样式 Pattern	工作状态 Action	型号 Model	颜色 color	灯电压 Voltage	外形尺寸 Dimension
按钮 Pushbutton		瞬动 Momentary 自锁 Maintained	LA133-E1.P/□▲ LA133-E1.PS/□▲	● 红-R ● 绿-G ● 黄-Y ○ 白-W ● 蓝-S ● 黑-B		
高位按钮 Raised lens Pushbutton		瞬动 Momentary 自锁 Maintained	LA133-E1.T/□▲ LA133-E1.TS/□▲	● 红-R ● 绿-G ● 黄-Y ○ 白-W ● 蓝-S ● 黑-B		
带灯按钮 Illuminated Pushbutton		瞬动 Momentary 自锁 Maintained	LA133-E1.PD/□■▲ LA133-E1.PDS/□■▲	● 红-R ● 绿-G ● 黄-Y ○ 白-W ● 蓝-S	DC · AC 6V、12V、 24V、36V、 48V、110V、 220V AC 110V、220V、 380V	
高位带灯按钮 Illuminated Raised lens Pushbutton		瞬动 Momentary 自锁 Maintained	LA133-E1.TD/□■▲ LA133-E1.TDS/□■▲	● 红-R ● 绿-G ● 黄-Y ○ 白-W ● 蓝-S	DC · AC 6V、12V、 24V、36V、 48V、110V、 220V AC 110V、220V、 380V	

◆ 说明

- 斜线后的□填写常开常闭的触点数(触点代码), ■填写带灯的电压等级, ▲填写颜色。
- 带灯按钮的光源均为高亮纯色LED。
- 订货时如需L2连接中座时, 即可把型号中E1改为E2。
- 订货时如需黑色按钮头时, 即可把型号中E改为e。

Description

- Contact Code is filled in □, voltage in ■, color code in ▲.
- Use bright & solid color of LED for illuminated Pushbutton.
- E1 can be changed into E2 when L2 bracket is necessary at ordering.
- A can be changed into a when black pushbutton is necessary at ordering.

名称 Name	样式 Pattern	工作状态 Action	型号 Model	颜色 color	灯电压 Voltage	外形尺寸 Dimension
蘑菇按钮 Mushroom pushbutton		瞬动 Momentary 自锁 Maintained	LA133-E1.M/□▲ LA133-E1.MS/□▲	● 红-R ● 绿-G ● 黄-Y ○ 白-W ● 蓝-S ● 黑-B		
蘑菇带灯按钮 Illuminated mushroom pushbutton		瞬动 Momentary 自锁 Maintained	LA133-E1.MD/□■▲ LA133-E1.MDS/□■▲	● 红-R ● 绿-G ● 黄-Y ○ 白-W ● 蓝-S	DC · AC 6V、12V、 24V、36V、 48V、110V、 220V AC 110V、220V、 380V	
紧急按钮 Emergency stop pushbutton		按压 锁定, 顺时针 旋转 复位 maintained when pressing button, return after clockwise rotation	LA133-E1.J/□▲	● 红-R ● 黄-Y		
指示灯 Indicator		常亮型 Illuminating	LA133-E1.D/■▲	● 红-R ● 绿-G ● 黄-Y ○ 白-W ● 蓝-S	DC · AC 6V、12V、 24V、36V、 48V、110V、 220V AC 110V、220V、 380V	

◆ 说明

- 斜线后的□填写常开常闭的触点数(触点代码), ■填写带灯的电压等级, ▲填写颜色。
- 带灯按钮的光源均为高亮纯色LED。
- 订货时如需L2连接中座时, 即可把型号中E1改为E2。
- 订货时如需黑色按钮头时, 即可把型号中E改为e。

Description

- Contact Code is filled in □, voltage in ■, color code in ▲.
- Use bright & solid color of LED for illuminated Pushbutton.
- A1 can be changed into A2 when L2 bracket is necessary at ordering.
- A can be changed into a when black pushbutton is necessary at ordering.

名称 Name	样式 Pattern	手柄位置及型号 Model	颜色 color	灯电压 Voltage	外形尺寸 Dimension
短柄旋钮 Short lever rotary selector		二位置 Two-position 0 90° LA133-E1.X2S/□▲	● 红-R ● 绿-G ● 黄-Y ● 黑-B		
		三位置 Three-position 45° 0 45° LA133-E1.X3S/□▲ 45° 0 45° LA133-E1.X3/□▲ 45° 0 45° LA133-E1.X3SR/□▲ 45° 0 45° LA133-E1.X3SL/□▲			
长柄旋钮 long lever rotary sector		二位置 Two-position 0 90° LA133-E1.XL2S/□▲	● 红-R ● 绿-G ● 黄-Y ● 黑-B		
		三位置 Three-position 45° 0 45° LA133-E1.XL3S/□▲ 45° 0 45° LA133-E1.XL3/□▲ 45° 0 45° LA133-E1.XL3SR/□▲ 45° 0 45° LA133-E1.XL3SL/□▲			
钥匙钮 Keylock switch		二位置 Two-position 0 90° LA133-E1.Y2S/□		钥匙在0位 可取出,若需在 其它位置取出, 订单时要注明 Key in 0 can be removed,if want take out in other locations, should be indicated on the orders	
		三位置 Three-position 45° 0 45° LA133-B1.Y3S/□ 45° 0 45° LA133-B1.Y3/□ 45° 0 45° LA133-B1.Y3SR/□ 45° 0 45° LA133-B1.Y3SL/□			

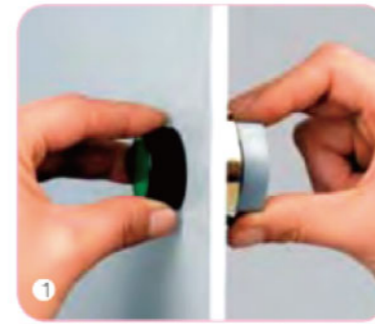
◆ 说明

- 斜线后的□填写常开常闭的触点数(触点代码),■填写带灯的电压等级,▲填写颜色。
- 带灯钮的光源均为高亮纯色LED。
- 订货时如需L2连接中座时,即可把型号中E1改为E2。
- 订货时如需黑色按钮头时,即可把型号中E改为e。

Description

- Contact Code is filled in □,voltage in ■,color code in ▲.
- Use bright & solid color of LED for illuminated Pushbutton.
- E1 can be changed into E2 when L2 bracket is necessary at ordering.
- A can be changed into a when black pushbutton is necessary at ordering.

◆ 安装使用说明 Illustration



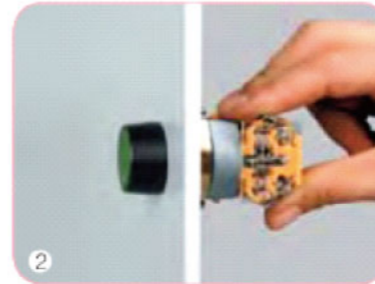
1. 将操作头部由面板前方插入安装孔,于面板后旋入连接中座,然后均匀拧紧两端紧定螺钉(切不可用力过猛,最大扭矩25N-cm),如面板为塑料等其他非金属材料,可在面板后垫上一块安装板(见附件F1)后再安装,如安装孔的直径为25mm时,可在面板后垫上一个Φ25的安装板(见附件F2)后再安装。

FL1连接中座按钮开关元件可连同连接中座一起安装;
FL2连接中座按钮,应先卸下开关元件,再安装连接中座。

注意:如安装后发现按钮有卡滞现象,应调节连接中座的两颗紧定螺钉,保持松紧一致,即可消除。

1. Insert the operator in the mounting hole from the front of panel,then twist in the bracket from the back of panel. Fasten the screws(not too strong,max.torque is 25N-cm).When the panel is plastic and other non-metal material,F1 can be put at the back of the panel.When the mounting hole is 25mm,F2 can be put at the back of mounting panel.
For FL1 type,the contact block can be mounted together with bracket.
For FL2 type,the contact block should be disassembled ,then assemble the bracket.

Note: If it doesn't work smoothly after mounting,please adjust both tightening screws to keep balance.

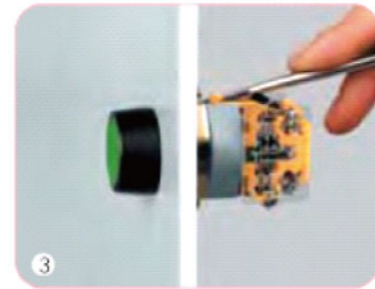


2. 开关元件直接扣上即可,头部的符号片可直接在前部进行安装(一般在出厂时已装好)。如安装带灯按钮时,即先扣上灯座,然后再扣上开关元件。

注意:安装完毕后,应检查开关元件的搭扣是否完全扣入。

2. Contact block can be directly fastened,the symbol parts can be mounted in the front of panel.Please fasten lamp holder before the contact block as mounting illuminated buttons.

Note:Please check the buckles of contact block after mounting.



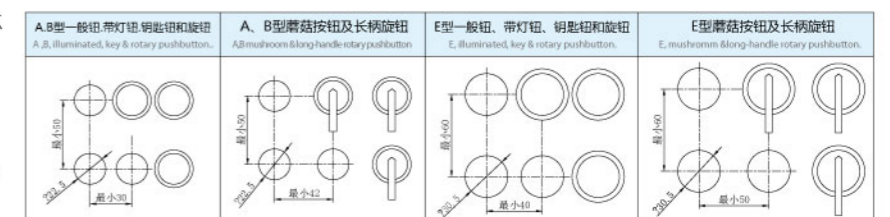
3. 拆除开关元件或灯座:用螺丝刀抬起锁扣安装系统的搭扣,即可随意简便地拆卸已扣紧安装的组件。

3. Disassembly the contact block and lamp holder,please screwdriver to lift the buckles of the mounting system.The mounted parts can be easily disassembled.

◆ 触点印字标签 Contact labelling

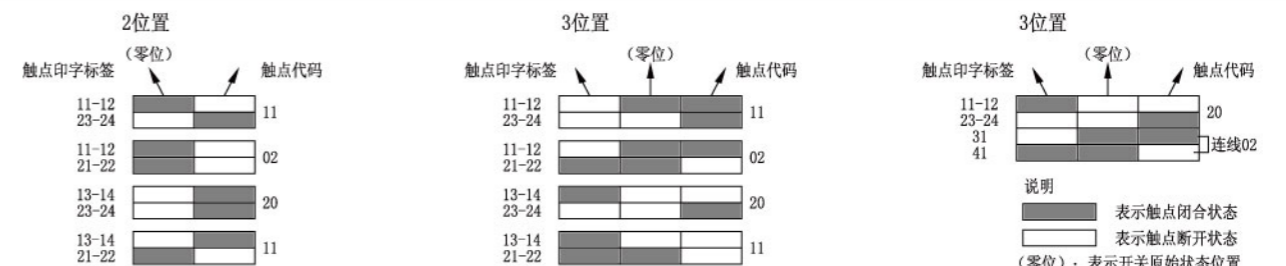
采用二位数字表示,第一位1、2表示第一开关元件触点位置,3、4表示第二开关元件触点位置,第二位1、2表示常闭,3、4表示常开。

A & B series normal pushbutton,illuminated pushbutton, key selector and selector
A & B series mushroom pushbutton & long lever rotary selector
E series normal pushbutton,illuminated pushbutton, key selector and selector
E series mushroom pushbutton & long lever rotary selector



◆ 开孔尺寸 Mounting hole size

◆ 旋钮、钥匙钮开关元件功能图解 Function diagram of selectors and key selectors



名称 Name	样式 Pattern	型号 Model	材料 Material	用途 Instruction
连接中座 Bracket		FL1	Zn+PBT	固定按钮用 For fixing pushbutton
		FL2	PBT	固定按钮用 For fixing pushbutton
开关触点座 Contact block	快动型 Snap-action 	FC-K10 FC-K01 FC-K11 FC-K02 FC-K20	PC	装在按钮的尾部，增加或减少触点用。 型号中的二位数字表示常开常闭接点数。 Screw terminal, snap-action with silver self-cleaning contacts. 2-digit figure in the model express NO & NC quantity of contacts.
	缓动型 Slow-make 	FC-H10 FC-H01 FC-H11 FC-H02 FC-H20	PC	装在按钮的尾部，增加或减少触点用。 型号中的二位数字表示常开常闭接点数。 Screw terminal, snap-action with silver self-cleaning contacts. 2-digit figure in the model express NO & NC quantity of contacts.
指示灯座 Lamp element		FL/■▲	PA	装在连接中座和触点座这间，用于带灯按钮。 型号■表示电压等级，▲表示颜色。 Installed between bracket and contact block for illuminated pushbutton. State colour in ■ and voltage category code in ▲.
小标志牌 Small Nameplate		FT1	塑料 Plastic	挂在按钮或指示灯上， 作符号指示或文字说明。 Hang on pushbutton or indicator for symbol or explanation.
大标志牌 Big Nameplate		FT2	塑料 Plastic	挂在按钮或指示灯上， 作符号指示或文字说明。 Hang on pushbutton or indicator for symbol or explanation.

名称 Name	样式 Pattern	型号 Model	材料 Material	用途 Application
φ22防护垫 φ22 Mounting ring		F1	铁 Fe	机箱面板材料为塑料时加装防护垫， 以提高强度。 Installed on plastic panel to strengthen mounting.
φ22面板塞 φ22 Panel plug		F3	ABS	用于封堵预留孔或多余孔 Fill up the redundant panel cut-outs making it seem more beautiful.
密封罩 Protective membrane		F4	硅胶 silicon gel	安装在按钮头部，可防水、防尘。 防护等级达IP67 Always on the head of operators. Waterproof and dustproof, IP67
紧急标志牌 Emergency stop Warning plate		F5	ABS	用于紧急按钮开关 Installed behind the emergency-off button as an eye-catcher.
防碰罩 Protective cover		F6	PC	安装在平头圆钮头部，可防撞、 防误动作，可封锁。 Protective cover for round pushbutton. Preventing collision & wrong operation. Can be locked.
旋钮防碰罩 Rotary protective cover		F7	PC	安装在旋钮头部，可防撞、 防误动作，可封锁。 Preventing collision & wrong operation. Can be locked.
按钮盒 Pushbutton box		1孔: YBOX-1 1hole: YBOX-1 2孔: YBOX-2 2holes: YBOX-2 3孔: YBOX-3 3holes: YBOX-3 4孔: YBOX-4 4holes: YBOX-4	ABS	根据客户需求， 对按钮开关或指示灯进行盒装。 Cased the switch or illumination according to customers' requirements.